

HSF

NOTES:

Rated Current:10.0AMP.(20°C,1*2P-1*10P)
 7.0AMP.(20°C,1*11P-1*20P) $\triangle A3$
 Contact Resistance:20m Ω Max.
 Withstand Voltage:1000V AC/DC
 Insulation Resistance:1000M Ω Min.
 Operation Temperature:-40°C to +105°C(Tin Plating)

Contact Material:Copper Alloy
 Contact Plating:Sn Over 30u" Min Ni
 Insulator Material:LCP+G.F UL94V-0 BK $\triangle A3$

Ordering Information

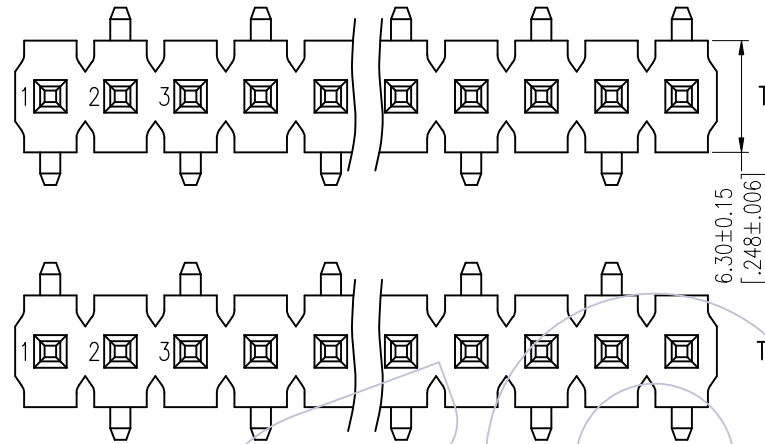
1832-1 1 XX XX M XXX D X XX

Plastic Layer
 Plastic Row
 No. of Pins
 Per Row:02~20
 Contact Plating
 SN=Bright Tin
 SM=Matte Tin $\triangle A3$

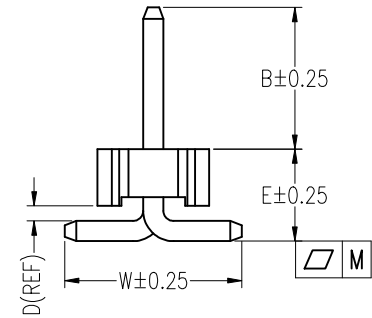
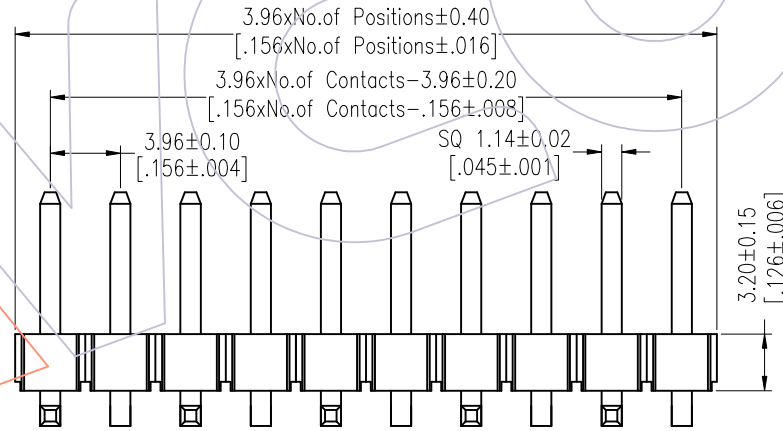
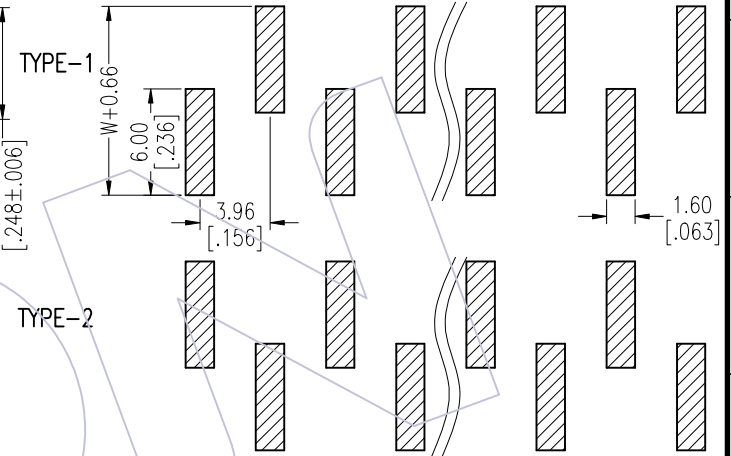
Series No.
 01~99
 Packing
 T=Tube
 Insulator Material
 D=LCP
 Pin Length
 L(See Table)
 Type:
 M=SMT

Item	Pin Length	W	D	E	B	Mating
Standard	16.5	10.0	0.85	5.19	8.0	2889
Alternate						

PIN(PerRow)	2-10P	11-20P	$\triangle A2$
M	0.12	0.20	



Recommended P.C.B Layout (Top Side)
 (PCB BOARD TOLERANCE±0.05)
 (PCB Thickness:T=1.60m)



REV	DATE	MODIFICATION DESCRIPTION	CHANGE	OPERATION	DRAW	DATE	SCALE	Fit	PART NO.
A3	2025/10/07	Standardization Drawing	CP	OPERATION	DRAW	2025/10/07	SCALE	Fit	1832-11XXXXMXXDXXX $\triangle A1$
A2	2023/02/04	Add Flatness	Du Ying	X.X ±0.40	CP	2025/10/07	UNIT	mm [inch]	TITLE: 3.96 Pin Header, SINGLE ROW, SMT, H=3.2
A1	2018/01/23	MODIFY PART NO.	William Chen	X.XX ±0.25	CHECK	2025/10/07	SIZE	A4	
A0	2012/06/25	NEW	-----	X.XXX ±0.15	TANG	2025/10/07	SHEET	1/3	
REV	DATE	MODIFICATION DESCRIPTION	CHANGE	Angle ± 3'	APPROVE	DATE	SHEET	1/3	Customer NO.
				DIM TOL	Steven Zhao	2025/10/07	PROJ.		

WCON

Http: www.wcon.com

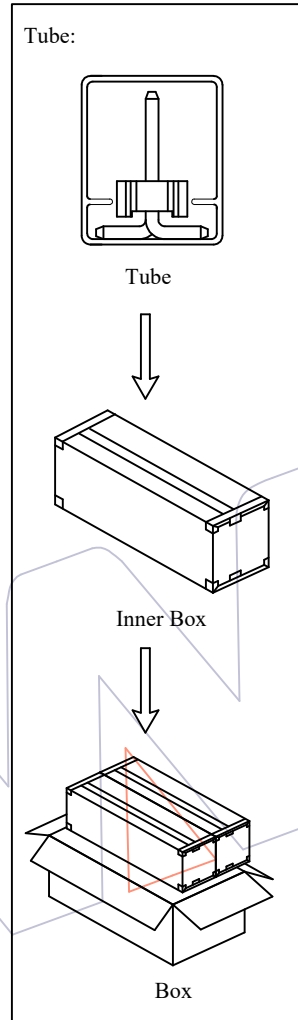
WCON-Dongguan
 Tel: +86 769 85358920
 Fax: +86 769 85358915
 E-mail: sales@wcon.com

WCON-Kunshan
 Tel: +86 512 57468408
 Fax: +86 512 57468468
 E-mail: salesks@wcon.com

HSF

Packing:

Packaging Quantity Refers To The Following Table



PINS	Q' ty/Tube	Q' ty/Inner Box	Q' ty/Box
2	50/Tray		2,400
3	40/Tray		1,920
4	35	2,800	5,600
5	28	2,240	4,480
6	24	1,920	3,840
7	20	1,600	3,200
8	18	1,440	2,880
9	16	1,280	2,560
10	14	1,120	2,240
11	13	1,040	2,080
12	12	960	1,920
13	11	880	1,760
14	10	800	1,600
15	9	720	1,440
16	9	720	1,440
17	8	640	1,280
18	8	640	1,280
19	7	560	1,120
20	7	560	1,120

A3	2025/10/07	Standardization Drawing	CP	OPERATION		DRAW	DATE	SCALE	Fit	PART NO. 1832-11XXXXMXXXDXXX
A2	2023/02/04	Add Flatness	Du Ying	X.X	±0.40	CP	2025/10/07	UNIT	mm [inch]	
A1	2018/01/23	MODIFY PART NO.	William Chen	X.XX	±0.25	CHECK	DATE	SIZE	A4	TITLE: 3.96 Pin Header, SINGLE ROW, SMT, H=3.2
A0	2012/06/25	NEW	-----	X.XXX	±0.15	TANG	2025/10/07	SHEET	2/2	
REV	DATE	MODIFICATION DESCRIPTION	CHANGE	Angle	± 3'	APPROVE	DATE	PROJ.		Customer NO.
				DIM	TOL	Steven Zhao	2025/10/07			



Http: www.wcon.com

WCON-Dongguan Tel: +86 769 85358920 Fax: +86 769 85358915 E-mail: sales@wcon.com	WCON-Kunshan Tel: +86 512 57468408 Fax: +86 512 57468468 E-mail: salesks@wcon.com
---	--