

# HSF

NOTES:  
 Rated Current: 3.0AMP.(20°C,1\*2P-1\*15P)  
 2.0AMP.(20°C,1\*16P-1\*40P)  $\triangle A3$   
 Contact Resistance: 20m $\Omega$  Max.  
 Withstand Voltage: 500V AC/DC  
 Insulation Resistance: 1000M $\Omega$  Min.  
 Operation Temperature: -40°C to +125°C(Gold Plating)  $\triangle A3$   
 -40°C to +105°C(Tin Plating)  $\triangle A3$

Contact Material: Copper Alloy  
 Contact Plating: Au or Sn Over 30u" Min Ni  $\triangle A3$   
 Insulator Material: PA9T+G.F UL94V-0 BK  $\triangle A3$

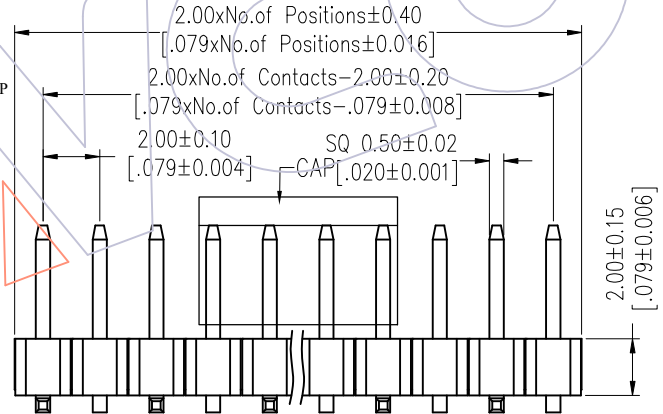
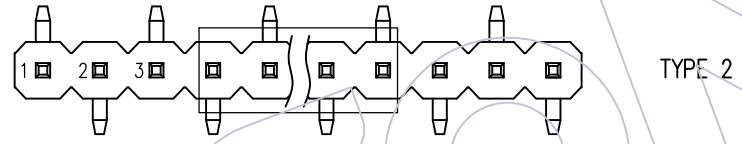
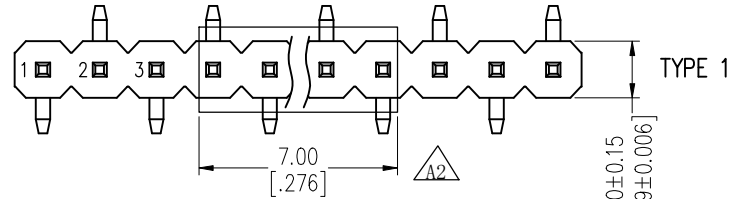
## Ordering Information

1220- 1 1 XX XX M XXX C R XX

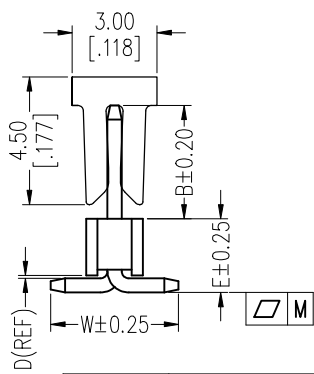
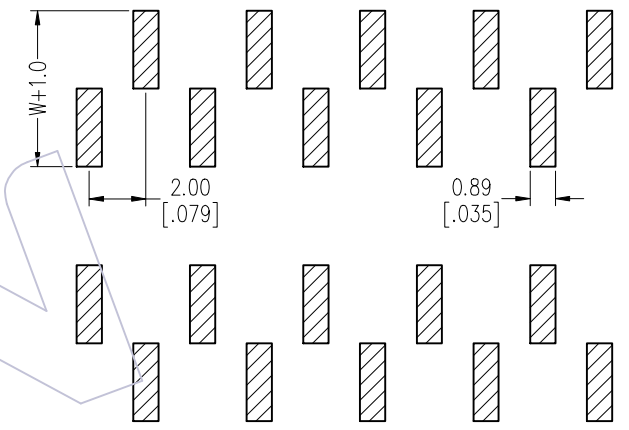
Plastic Layer  
 Plastic Row  
 No. of Pins  
 Per Row: 02-40  
 Contact Plating  
 G0=Gold Flash  
 G3=10u"Au, BG3=8u"PdNi+2u"Au  
 G4=15u"Au, BG4=13u"PdNi+2u"Au  
 G5=30u"Au, BG5=28u"PdNi+2u"Au  
 S0=Gold Flash/Tin  
 S3=10u"Au/Sn, P3=8u"PdNi+2u"Au/Sn  
 S4=15u"Au/Sn, P4=13u"PdNi+2u"Au/Sn  
 S5=30u"Au/Sn, P5=28u"PdNi+2u"Au/Sn  
 SN=Bright Tin  
 SM=Matte Tin

Series No.  
 01-99  
 Packing  
 T=Tube  
 P=Tube+CAP  
 R=Tape&Reel+CAP  
 Insulator Material  
 C=PA9T  
 Pin Length  
 L(See Table)  
 Type:  
 M:SMT

Item	Pin Length	W	D	E	B	Mating
Standard	6.8	4.5	0.1	2.6	2.5	2220T/2221/2228
	7.3				3.0	2227T/2228T/2245
	7.8				3.5	2235/2240N/2243C
	8.3				4.0	2240/2243/2245T/2263/2272
Alternate						



Recommended P.C.B Layout (Top Side)  
 (PCB BOARD TOLERANCE±0.05)  
 (PCB Thickness: T=1.60m)



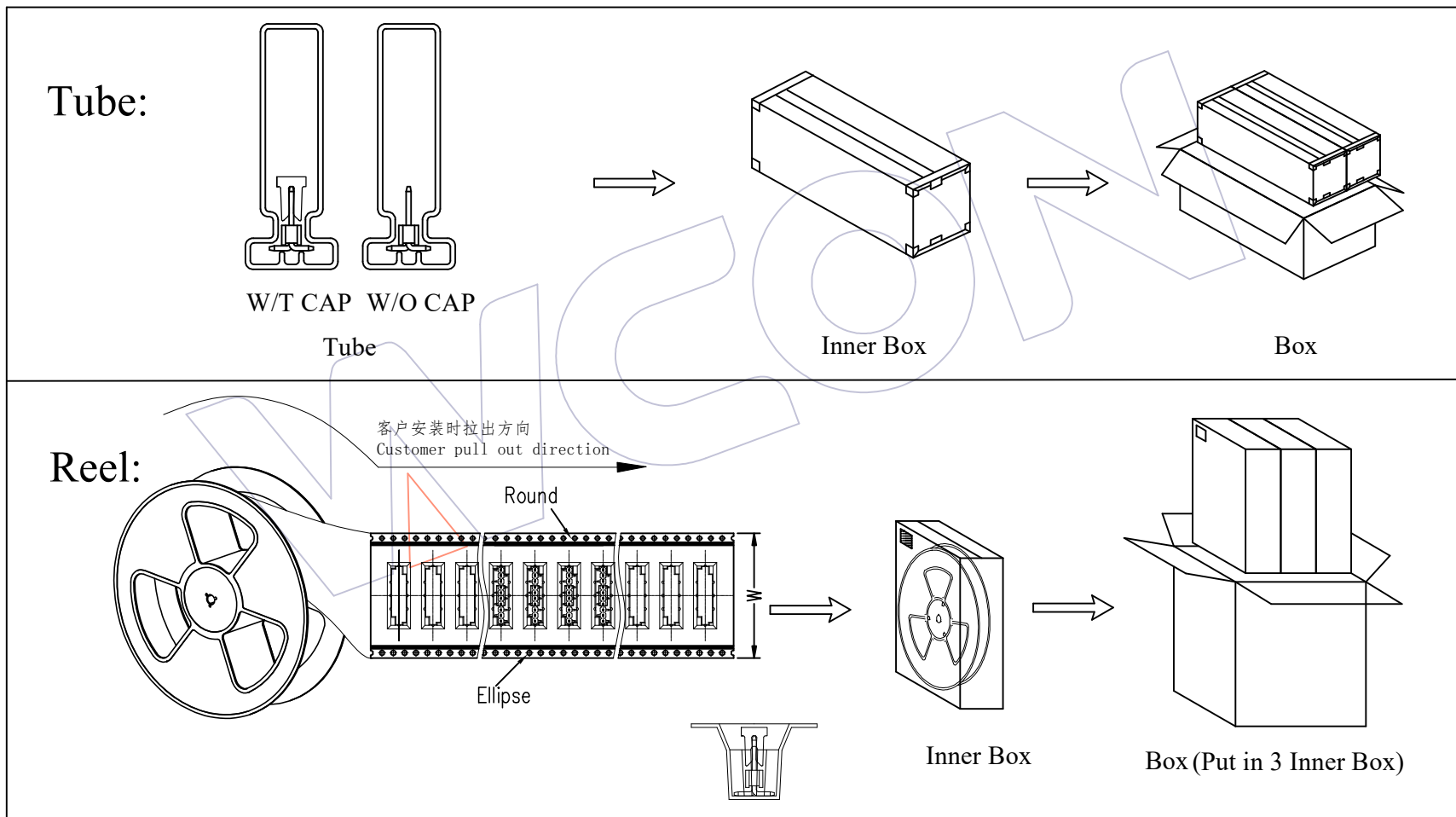
	TITLE	PART NO.	SPEC. $\triangle A3$
$\triangle A3$	PIN 2-15P 16-25P 26-40P	TYPE 1 1220-11XXXXMXXXCR01	DUAL/ODD PINS
	M 0.10 0.15 0.18	TYPE 2 1220-11XXXXMXXXCR02	DUAL PINS

REV	DATE	MODIFICATION DESCRIPTION	CHANGE	OPERATION	DRAW	DATE	SCALE	Fit	PART NO.
A3	2025/04/11	Standardization Drawing	CP	OPERATION	DRAW	2025/04/11	UNIT	mm	1220-11XXXXMXXXCRXX $\triangle A3$
A2	2019/07/20	Modify the CAP	Ding	x.X ±0.40	CP	2025/04/11	SIZE	A4	TITLE: PH2.00 SINGLE ROW SMT H=2.0
A1	2018/01/18	Modify P/N	Liu	x.XX ±0.25	CHECK	2025/04/11	SHEET	1/3	Customer NO.
A0	2012/04/26	NEW	William Chen	x.XXX ±0.15	TANG	2025/04/11	PROJ.		
				Angle ± 3°	APPROVE	2025/04/11			
				DIM TOL	Steven Zhao				

**WCON**  
 Http: www.wcon.com  
 WCON-Dongguan Tel: +86 769 85358920 Fax: +86 769 85358915 E-mail: sales@wcon.com  
 WCON-Kunshan Tel: +86 512 57468408 Fax: +86 512 57468468 E-mail: salesks@wcon.com

**HSF**

**Packing:**



A3	2025/04/11	Standardization Drawing	CP	OPERATION	DRAW	DATE	SCALE	Fit	PART NO.
A2	2019/07/20	Modify the CAP	Ding	x.X    ±0.40	CP	2025/04/11	UNIT	mm	1220-11XXXXMXXCRXX
A1	2018/01/18	Modify P/N	Liu	x.XX    ±0.25	CHECK	DATE	SIZE	A4	TITLE:
A0	2012/04/26	NEW	William Chen	x.XXX    ±0.15	TANG	2025/04/11	SHEET	2/3	PH2.00 SINGLE ROW SMT H=2.0
REV	DATE	MODIFICATION DESCRIPTION	CHANGE	Angle    ± 3°	APPROVE	DATE	PROJ.		Customer NO.
				DIM    TOL	Steven Zhao	2025/04/11			

**WCON**

Http: [www.wcon.com](http://www.wcon.com)

WCON-Dongguan    WCON-Kunshan

Tel: +86 769 85358920    Tel: +86 512 57468408

Fax: +86 769 85358915    Fax: +86 512 57468468

E-mail: [sales@wcon.com](mailto:sales@wcon.com)    E-mail: [salesks@wcon.com](mailto:salesks@wcon.com)



Packaging Quantity Refers To The Following Table

PINS	Q'ty/Tube	Q'ty/Inner Box	Q'ty/Box
4	69	5,520	11,040
5	55	4,400	8,800
6	46	3,680	7,360
7	40	3,200	6,400
8	35	2,800	5,600
9	31	2,480	4,960
10	28	2,240	4,480
11	25	2,000	4,000
12	24	1,920	3,840
13	21	1,680	3,360
14	20	1,600	3,200
15	19	1,520	3,040
16	17	1,360	2,720
17	16	1,280	2,560
18	15	1,200	2,400
19	15	1,200	2,400
20	14	1,120	2,240
21	13	1,040	2,080
22	13	1,040	2,080

PINS	Q'ty/Tube	Q'ty/Inner Box	Q'ty/Box
23	12	960	1,920
24	11	880	1,760
25	11	880	1,760
26	11	880	1,760
27	10	800	1,600
28	10	800	1,600
29	9	720	1,440
30	9	720	1,440
31	9	720	1,440
32	9	720	1,440
33	8	640	1,280
34	8	640	1,280
35	8	640	1,280
36	8	640	1,280
37	7	560	1,120
38	7	560	1,120
39	7	560	1,120
40	7	560	1,120

B=2.5/3.0/3.5

PINS	W	Q'ty/Reel	Q'ty/Inner Box	Q'ty/Box
2	16	700	2,800	8,400
3	24	700	2,100	6,300
4	24	700	2,100	6,300
5	24	700	2,100	6,300
6	24	700	2,100	6,300
7	32	700	1,400	4,200
8	32	700	1,400	4,200
9	32	700	1,400	4,200
10	44	700	1,400	4,200
11	44	700	1,400	4,200
12	44	700	1,400	4,200
13	44	700	1,400	4,200
14	44	700	1,400	4,200
15	44	700	1,400	4,200
16	56	700	700	2,100
17	56	700	700	2,100
18	56	700	700	2,100

B=2.5/3.0/3.5

PINS	W	Q'ty/Reel	Q'ty/Inner Box	Q'ty/Box
19	56	700	700	2,100
20	56	700	700	2,100
21	56	700	700	2,100
22	72	700	700	2,100
23	72	700	700	2,100
24	72	700	700	2,100
25	72	700	700	2,100
26	72	700	700	2,100
27	72	700	700	2,100
28	72	700	700	2,100
29	72	700	700	2,100
30	88	700	700	2,100
31	88	700	700	2,100
32	88	700	700	2,100
33	88	700	700	2,100
34	88	700	700	2,100
35	88	700	700	2,100

B=4.0

PINS	W	Q'ty/Reel	Q'ty/Inner Box	Q'ty/Box
2	16	600	2,400	7,200
3	24	600	1,800	5,400
4	24	600	1,800	5,400
5	24	600	1,800	5,400
6	24	600	1,800	5,400
7	32	600	1,200	3,600
8	32	600	1,200	3,600
9	44	600	1,200	3,600
10	44	600	1,200	3,600
11	44	600	1,200	3,600
12	44	600	1,200	3,600
13	44	600	1,200	3,600
14	44	600	1,200	3,600
15	56	600	600	1,800
16	56	600	600	1,800
17	56	600	600	1,800
18	56	600	600	1,800

B=4.0

PINS	W	Q'ty/Reel	Q'ty/Inner Box	Q'ty/Box
19	56	600	600	1,800
20	56	600	600	1,800
21	72	600	600	1,800
22	72	600	600	1,800
23	72	600	600	1,800
24	72	600	600	1,800
25	72	600	600	1,800
26	72	600	600	1,800
27	72	600	600	1,800
28	72	600	600	1,800
29	88	600	600	1,800
30	88	600	600	1,800
31	88	600	600	1,800
32	88	600	600	1,800
33	88	600	600	1,800
34	88	600	600	1,800
35	88	600	600	1,800

A3	2025/04/11	Standardization Drawing	CP	OPERATION	DRAW	DATE	SCALE	Fit	PART NO.
A2	2019/07/20	Modify the CAP	Ding	x.X ±0.40	CP	2025/04/11	UNIT	mm	1220-11XXXXMXXCRXX $\Delta$
A1	2018/01/18	Modify P/N	Liu	x.XX ±0.25	CHECK	DATE	SIZE	A4	TITLE:
A0	2012/04/26	NEW	William Chen	x.XXX ±0.15	TANG	2025/04/11	SHEET	3/3	PH2.00 SINGLE ROW SMT H=2.0
REV	DATE	MODIFICATION DESCRIPTION	CHANGE	Angle ± 3°	APPROVE	DATE	PROJ.	$\phi$ $\equiv$	Customer NO.
				DIM TOL	Steven Zhao	2025/04/11			



Http: www.wcon.com  
 WCON-Dongguan Tel: +86 769 85358920  
 WCON-Kunshan Tel: +86 512 57468408  
 Fax: +86 769 85358915 Fax: +86 512 57468468  
 E-mail: sales@wcon.com E-mail: salesks@wcon.com