

HSF

NOTES:

- Insulator material: PA9T+33%G.F, UL94 V-0;
- Terminal material: Copper Alloy;
Terminal Plating: Au/Sn Plated Over Nickel ;
- Rated Voltage: Power 600V; Δ
- Rated Current: Power 30A; Δ
- Contact Resistance:
Power 0.7m Ω Max; Δ
- Insulation Resistance: DC500V
Power 10000M Ω Min; Δ
- Insulation Withstand Voltage:
Power 2500VAC/1min; Δ
- Durability :200 cycling;
- Operation Temperature:-20°C to +105°C;

P4FS A - XX XX X X A 1

No. Power:
01=1Pin
20=20Pin

Tail Options(DIP Type):
A=3.43mm
B=2.29mm
C=4.19mm

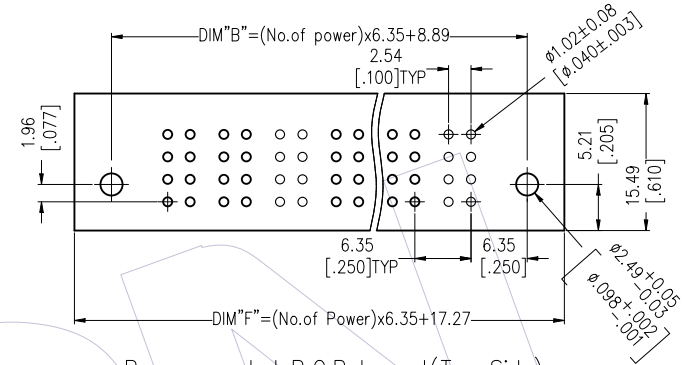
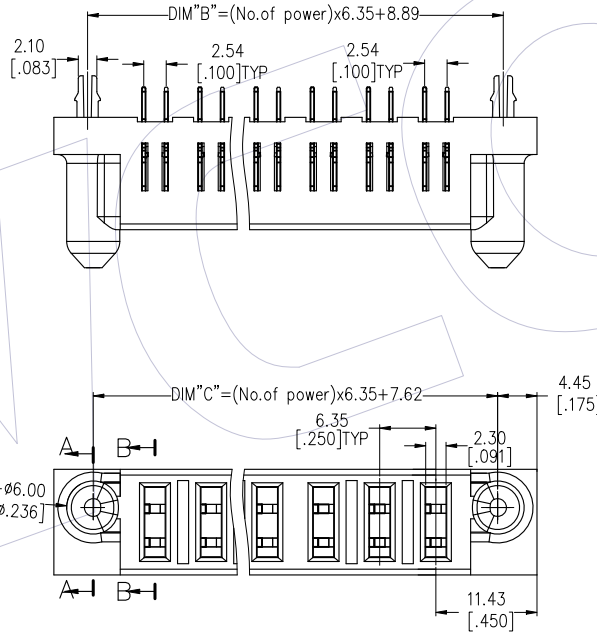
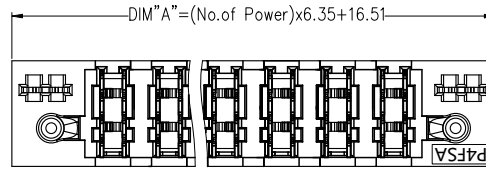
Packing:
A=Tray

Power Contact Plated:
W3=10u" Gold /Matte Tin
W4=15u" Gold /Matte Tin
W5=30u" Gold /Matte Tin Δ

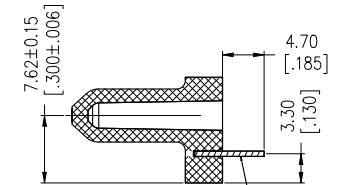
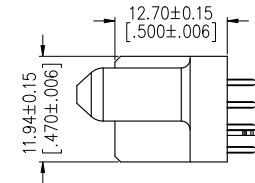
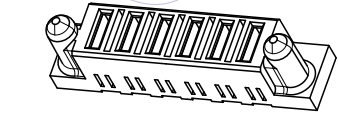
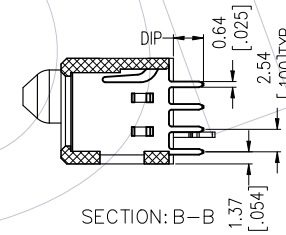
Fixed Mode:
M: W/T Lock
N: W/O Lock

Product Data Sheet

No.	P/N	No. Power	DIM "A"	DIM "B"	DIM "C"	DIM "F"
1	P4FSA-16XXXXA1	16	118.1	110.49	109.22	113.87
2	P4FSA-11XXXXA1	11	86.36	78.74	77.47	82.12
3	P4FSA-10XXXXA1	10	80.01	72.39	71.12	75.77
4	P4FSA-09XXXXA1	9	73.66	66.04	64.77	69.42
5	P4FSA-08XXXXA1	8	67.31	59.69	58.42	63.07
6	P4FSA-07XXXXA1	7	60.96	53.34	52.07	56.72
7	P4FSA-06XXXXA1	6	54.61	46.99	45.72	50.37
8	P4FSA-05XXXXA1	5	48.26	40.64	39.37	44.02
9	P4FSA-04XXXXA1	4	41.91	34.29	33.02	37.67
10	P4FSA-03XXXXA1	3	35.56	27.94	26.67	31.32
11	P4FSA-02XXXXA1	2	29.21	21.59	20.32	24.97



Recommended P.C.B Layout (Top Side)
(PCB BOARD TOLERANCE ±0.05)



LOCK: See Coding

SECTION: A-A

REV	DATE	MODIFICATION DESCRIPTION	CHANGE	OPERATION	DRAW	DATE	SCALE	FIT	PART NO.
A2	2024/09/04	Cancel Xu"Gold/Tin Plated	XSR	x.x ±0.40	XSR	2024/09/04	UNIT	mm	P4FSA-XXXXXA1
A1	2022/03/28	Modify Notes	---	x.xx ±0.25	CHECK	DATE	SIZE	A4	
A0	2018/10/15	NEW	---	x.xxx ±0.15	APPROVE	DATE	SHEET	1/1	TITLE: PSP Spacing A 180' DIP FEMALE (TYPE-4:Power)
REV	DATE	MODIFICATION DESCRIPTION	CHANGE	Angle ± 3° DIM TOL		DATE	PROJ.	Customer NO.	

WCON

Http: www.wcon.com

WCON-Dongguan
Tel: +86 769 85358920
Fax: +86 769 85358915
E-mail: sales@wcon.com

WCON-Kunshan
Tel: +86 512 57468408
Fax: +86 512 57468468
E-mail: salesks@wcon.com