

HSF

NOTES:

- Insulator material: PA9T+33%G.F, UL94 V-0;
- Terminal material: Copper Alloy;
Terminal Plating: Au/Sn Plated Over Nickel ;
- Rated Voltage: Power 600V;
- Rated Current: Power 30A; Δ
- Contact Resistance:
Power 0.7m Ω Max; Δ
- Insulation Resistance: DC500V
Power 10000M Ω Min; Δ
- Insulation Withstand Voltage:
Power 2500VAC/1min; Δ
- Durability :200 cycling;
- Operation Temperature: -20°C to +105°C;

P4MS A - XX XX X X A 1

No. Power:
01=1Pin
.....
20=20Pin

Tail Options(DIP Type):
A=3.43mm
B=2.29mm
C=4.19mm

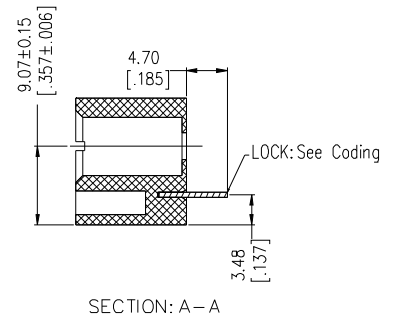
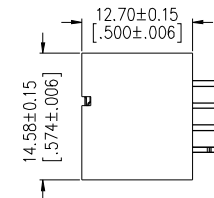
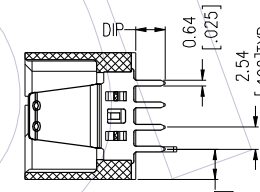
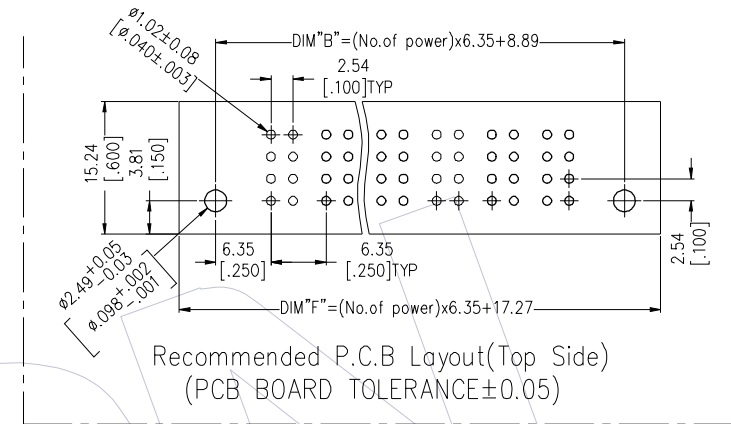
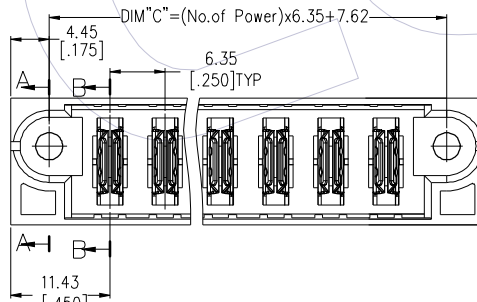
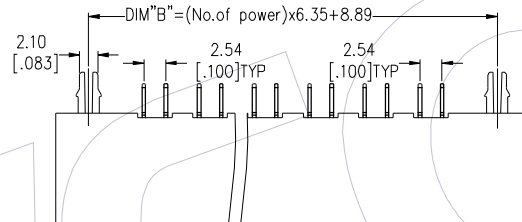
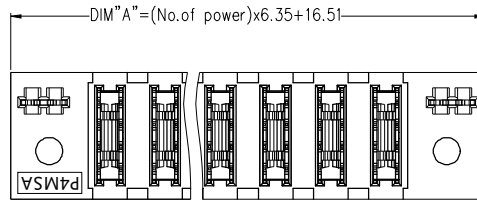
Power Contact Plated:
S3=10u" Gold /Tin
S4=15u" Gold /Tin
S5=30u" Gold /Tin
w3=10u" Gold /Matte Tin
w4=15u" Gold /Matte Tin
w5=30u" Gold /Matte Tin

Packing:
A=Tray

Fixed Mode:
M: W/T Lock
N: W/O Lock

Product Data Sheet

No.	P/N	No. Power	DIM "A"	DIM "B"	DIM "C"	DIM "F"
1	P4MSA-14XXXXA1	14	105.4	97.79	96.52	101.17
2	P4MSA-11XXXXA1	10	80.01	72.39	71.12	75.77
3	P4MSA-08XXXXA1	8	67.31	59.69	58.42	63.07
4	P4MSA-07XXXXA1	7	60.96	53.34	52.07	56.72
5	P4MSA-06XXXXA1	6	54.61	46.99	45.72	50.37
6	P4MSA-05XXXXA1	5	48.26	40.64	39.37	44.02
7	P4MSA-04XXXXA1	4	41.91	34.29	33.02	37.67
8	P4MSA-03XXXXA1	3	35.56	27.94	26.67	31.32
9	P4MSA-02XXXXA1	2	29.21	21.59	20.32	24.97



OPERATION	DRAW PAN	DATE	SCALE	FIT	PART NO.	TITLE:	Customer NO.
x.x	±0.40	2022/03/28		A4	P4MSA-XXXXXA1	PSP Spacing A 180° DIP MALE (TYPE-4:Power)	
x.xx	±0.25	DATE		1/1			
x.xxx	±0.15	DATE					
Angle	± 3'	DATE					
DIM	TOL						

REV	DATE	MODIFICATION DESCRIPTION	CHANGE
A1	2022/03/28	Modify Notes	
A0	2018/10/15	NEW	

WCON

Http: www.wcon.com

WCON-Dongguan
Tel: +86 769 85358920
Fax: +86 769 85358915
E-mail: sales@wcon.com

WCON-Kunshan
Tel: +86 512 57468408
Fax: +86 512 57468468
E-mail: salesks@wcon.com