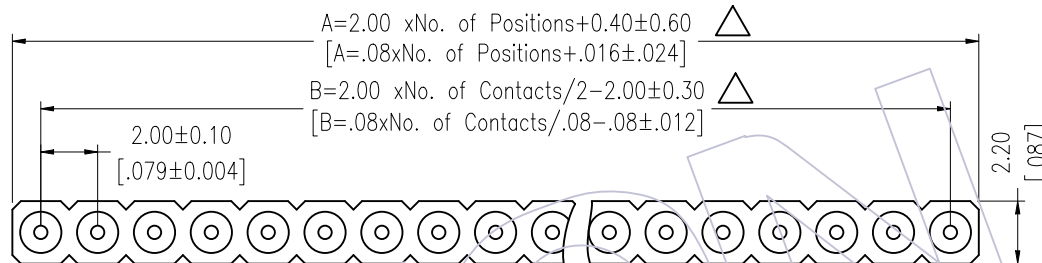
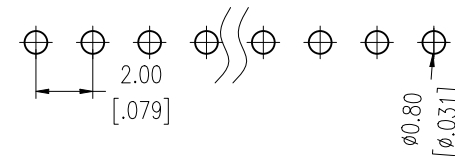


HSF

Recommended P.C.B Layout(Top Side)
(PCB BOARD TOLERANCE±0.05)

TECHNICAL SPECS:
 Current Rating:3.0AMP
 Contact Resistance:10mΩ Max
 Dielectric Strength: Min 1000Vrms
 Mechanical Life: Min 500 cycles
 Operation Temperature:-40°C to +105°C

Sleeve:Brass CuZn36Pb3(C36000)
 Connecting Pin:∅0.47mm
 Contact plating:Au or Sn over Ni
 Insulator Material:PPS+30%G.F(UL94V-0)



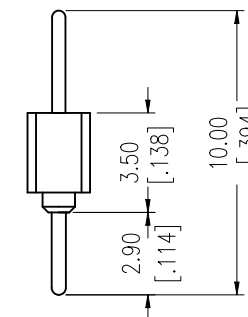
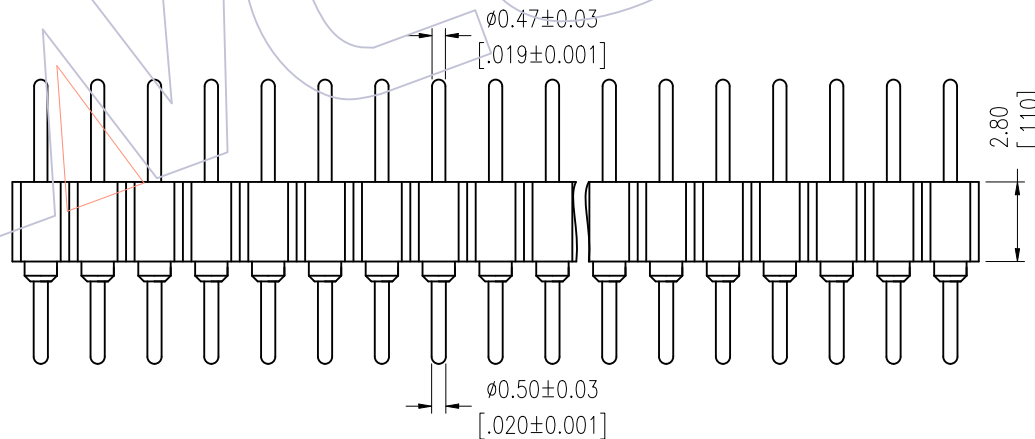
Ordering Information

3512-281 XX S XX 100 X 1

No. of Pin
2-40PIN

Contact Plating
 G0=Gold Flash
 G3=10u"Gold
 G4=15u"Gold
 G5=30u"Gold
 SN=Tin

Packing
 A=Tray
 T=Tube



REV	DATE	MODIFICATION DESCRIPTION	CHANGE	OPERATION	DRAW MYQ	DATE	SCALE	FIT	PART NO.
A1	12/01/03	Modify drawing	—	X.X ±0.40	CHECK	2012/01/03	UNIT mm	A4	3512-281XXSXX100X1
A0	09/02/26	NEW	—	X.XX ±0.25	APPROVE	DATE	SHEET 1/1		TITLE: 2.00mm MACHINED PIN HEADER SINGLE ROW 180° H=2.80 L=10.0
				X.XXX ±0.15		DATE	PROJ.		Customer NO.
				Angle ± 3'					
				DIM TOL					

WCON

Http: www.wcon.com

WCON-Dongguan Tel: +86 769 85358920 Fax: +86 769 85358915 E-mail: sales@wcon.com
 WCON-Kunshan Tel: +86 512 57468408 Fax: +86 512 57468468 E-mail: wconks@wcon.com