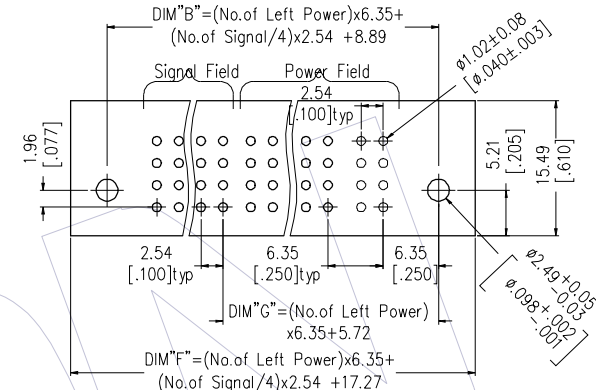
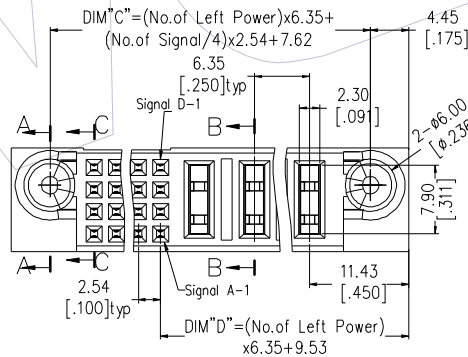
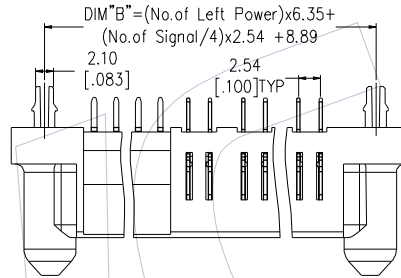
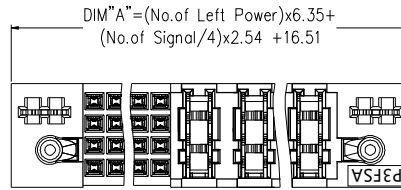


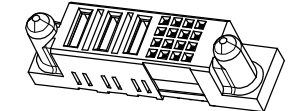
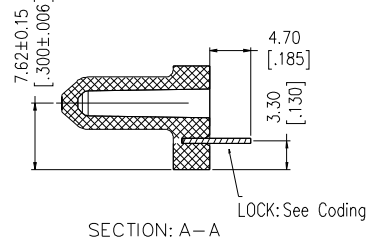
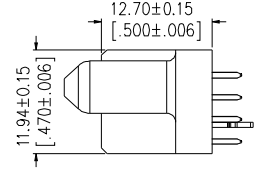
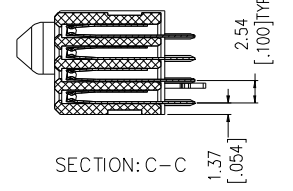
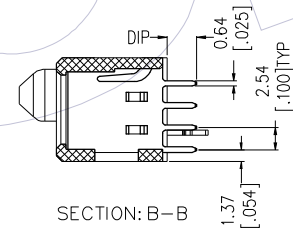
# HSF

**NOTES:**

1. Insulator material: PA9T+33%G.F, UL94 V-0;
2. Terminal material: Copper Alloy;  
Terminal Plating: Au/Sn Plated Over Nickel ;
3. Rated Voltage: Signal 50V; Power 600V  $\Delta$
4. Rated Current: Signal 2.5A; Power 30A;
5. Contact Resistance:  
Power 0.7m $\Omega$  Max; Signal 20m $\Omega$  Max;
6. Insulation Resistance: DC500V  
Power 10000M $\Omega$  Min; Signal 500M $\Omega$  Min;
7. Insulation Withstand Voltage:  
Power 2500VAC/1min; Signal 1000VAC/1min ;
8. Durability :200 cycling;
9. Operation Temperature: -20°C to +105°C;



Recommended P.C.B Layout(Top Side)  
(PCB BOARD TOLERANCE  $\pm 0.05$ )



**P3FSA A - XX - XXX XX XX X X A 1**

No. Left Power:  
01=1Pin  
20=20Pin

No. Signal:  
004=4Pin  
008=8Pin  
100=100Pin  
104=104Pin  
144=144Pin  
148=148Pin

Power Contact Plated:  
S3=10u" Gold /Tin  
S4=15u" Gold /Tin  
S5=30u" Gold /Tin  
w3=10u" Gold /Matte Tin  
w4=15u" Gold /Matte Tin  
w5=30u" Gold /Matte Tin

Signal Contact Plated:  
S3=10u" Gold /Tin  
S4=15u" Gold /Tin  
S5=30u" Gold /Tin  
w3=10u" Gold /Matte Tin  
w4=15u" Gold /Matte Tin  
w5=30u" Gold /Matte Tin

Tail Options(DIP Type):  
A=3.43mm  
B=2.29mm  
C=4.19mm

Packing:  
A=Tray

Fixed Mode:  
M: W/T Lock  
N: W/O Lock

REV	DATE	MODIFICATION DESCRIPTION	CHANGE	OPERATION		DRAW PAN	DATE	SCALE	FIT	PART NO.
				x.x	$\pm 0.40$					
A1	2022/03/25	Modify Notes		x.xx	$\pm 0.25$	CHECK	2022/03/25	UNIT	mm	P3FSA-XX-XXXXXXXXXA1
A0	2018/10/10	NEW		x.xxx	$\pm 0.15$		DATE	SIZE	A4	
				Angle	$\pm 3^\circ$	APPROVE	DATE	SHEET	1/2	TITLE: PSP Spacing A 180° DIP FEMALE (TYPE-3:Left Power+2.54Signal)
				DIM	TOL			PROJ.	$\phi$ $\Delta$	Customer NO.

**WCON**  
Http: www.wcon.com

WCON-Dongguan  
Tel: +86 769 85358920  
Fax: +86 769 85358915  
E-mail: sales@wcon.com

WCON-Kunshan  
Tel: +86 512 57468408  
Fax: +86 512 57468468  
E-mail: salesks@wcon.com



Product Data Sheet

No.	P/N	No. Left Power	No. Signal	DIM "A"	DIM "B"	DIM "C"	DIM "D"	DIM "F"	DIM "G"
1	P3FSA-20-012XXXXXXXXA1	20	12	151.13	143.51	142.24	136.53	151.89	132.72
2	P3FSA-14-032XXXXXXXXA1	14	32	125.73	118.11	116.84	98.43	126.49	94.62
3	P3FSA-14-024XXXXXXXXA1	14	24	120.65	113.03	111.76	98.43	121.41	94.62
4	P3FSA-13-012XXXXXXXXA1	13	12	106.68	99.06	97.79	92.08	107.44	88.27
5	P3FSA-12-024XXXXXXXXA1	12	24	107.95	100.33	99.06	85.73	108.71	81.92
6	P3FSA-12-020XXXXXXXXA1	12	20	105.41	97.79	96.52	85.73	106.17	81.92
7	P3FSA-10-024XXXXXXXXA1	10	24	95.25	87.63	86.36	73.03	96.01	69.22
8	P3FSA-10-012XXXXXXXXA1	10	12	87.63	80.01	78.74	73.03	88.39	69.22
9	P3FSA-09-020XXXXXXXXA1	9	20	86.36	78.74	77.47	66.68	87.12	62.87
10	P3FSA-08-044XXXXXXXXA1	8	44	95.25	87.63	86.36	60.33	96.01	56.52
11	P3FSA-08-024XXXXXXXXA1	8	24	82.55	74.93	73.66	60.33	83.31	56.52
12	P3FSA-08-016XXXXXXXXA1	8	16	77.47	69.85	68.58	60.33	78.23	56.52
13	P3FSA-08-012XXXXXXXXA1	8	12	74.93	67.31	66.04	60.33	75.69	56.52
14	P3FSA-08-008XXXXXXXXA1	8	8	72.39	64.77	63.50	60.33	73.15	56.52
15	P3FSA-07-040XXXXXXXXA1	7	40	86.36	78.74	77.47	53.98	87.12	50.17
16	P3FSA-07-024XXXXXXXXA1	7	24	76.20	68.58	67.31	53.98	76.96	50.17
17	P3FSA-06-104XXXXXXXXA1	6	104	120.65	113.03	111.76	47.63	121.41	43.82
18	P3FSA-06-040XXXXXXXXA1	6	40	80.01	72.39	71.12	47.63	80.77	43.82
19	P3FSA-06-036XXXXXXXXA1	6	36	77.47	69.85	68.58	47.63	78.23	43.82
20	P3FSA-06-032XXXXXXXXA1	6	32	74.93	67.31	66.04	47.63	75.69	43.82
21	P3FSA-06-024XXXXXXXXA1	6	24	69.85	62.23	60.96	47.63	70.61	43.82
22	P3FSA-06-020XXXXXXXXA1	6	20	67.31	59.69	58.42	47.63	68.07	43.82
23	P3FSA-06-016XXXXXXXXA1	6	16	64.77	57.15	55.88	47.63	65.53	43.82
24	P3FSA-06-012XXXXXXXXA1	6	12	62.23	54.61	53.34	47.63	62.99	43.82

No.	P/N	No. Left Power	No. Signal	DIM "A"	DIM "B"	DIM "C"	DIM "D"	DIM "F"	DIM "G"
25	P3FSA-06-008XXXXXXXXA1	6	8	59.69	52.07	50.80	47.63	60.45	43.82
26	P3FSA-05-024XXXXXXXXA1	5	24	63.50	55.88	54.61	41.28	64.26	37.47
27	P3FSA-05-016XXXXXXXXA1	5	16	58.42	50.80	49.53	41.28	59.18	37.47
28	P3FSA-04-060XXXXXXXXA1	4	60	80.01	72.39	71.12	34.93	80.77	31.12
29	P3FSA-04-032XXXXXXXXA1	4	32	62.23	54.61	53.34	34.93	62.99	31.12
30	P3FSA-04-024XXXXXXXXA1	4	24	57.15	49.53	48.26	34.93	57.91	31.12
31	P3FSA-04-020XXXXXXXXA1	4	20	54.61	46.99	45.72	34.93	55.37	31.12
32	P3FSA-04-016XXXXXXXXA1	4	16	52.07	44.45	43.18	34.93	52.83	31.12
33	P3FSA-04-008XXXXXXXXA1	4	8	46.99	39.37	38.10	34.93	47.75	31.12
34	P3FSA-03-016XXXXXXXXA1	3	16	45.72	38.10	36.83	28.58	46.48	24.77
35	P3FSA-03-004XXXXXXXXA1	3	4	38.10	30.48	29.21	28.58	38.86	24.77
36	P3FSA-02-076XXXXXXXXA1	2	76	77.47	69.85	68.58	22.23	78.23	18.42
37	P3FSA-02-040XXXXXXXXA1	2	40	54.61	46.99	45.72	22.23	55.37	18.42
38	P3FSA-02-036XXXXXXXXA1	2	36	52.07	44.45	43.18	22.23	52.83	18.42
39	P3FSA-02-024XXXXXXXXA1	2	24	44.45	36.83	35.56	22.23	45.21	18.42
40	P3FSA-02-016XXXXXXXXA1	2	16	39.37	31.75	30.48	22.23	40.13	18.42
41	P3FSA-02-012XXXXXXXXA1	2	12	36.83	29.21	27.94	22.23	37.59	18.42
42	P3FSA-02-008XXXXXXXXA1	2	8	34.29	26.67	25.40	22.23	35.05	18.42
43	P3FSA-02-004XXXXXXXXA1	2	4	31.75	24.13	22.86	22.23	32.51	18.42
44	P3FSA-01-036XXXXXXXXA1	1	36	45.72	38.10	36.83	15.88	46.48	12.07
45	P3FSA-01-020XXXXXXXXA1	1	20	35.56	27.94	26.67	15.88	36.32	12.07

A1	2022/03/25	Modify Notes	CHANGE	OPERATION		DRAW PAN	DATE 2022/03/25	SCALE	FIT	PART NO. P3FSA-XX-XXXXXXXXA1	 <a href="http://www.wcon.com">Http: www.wcon.com</a>
				x.x	±0.40			UNIT	mm		
A0	2018/10/10	NEW	CHANGE	CHECK		CHECK	DATE	SIZE	A4	TITLE: PSP Spacing A 180° DIP FEMALE (TYPE-3:Left Power+2.54Signal)	WCON-Dongguan Tel: +86 769 85358920 Fax: +86 769 85358915 E-mail: sales@wcon.com
				x.xx	±0.25			SHEET	2/2		
REV	DATE	MODIFICATION DESCRIPTION	CHANGE	Angle	± 3°	APPROVE	DATE	PROJ.		Customer NO.	WCON-Kunshan Tel: +86 512 57468408 Fax: +86 512 57468468 E-mail: salesks@wcon.com
				DIM	TOL						