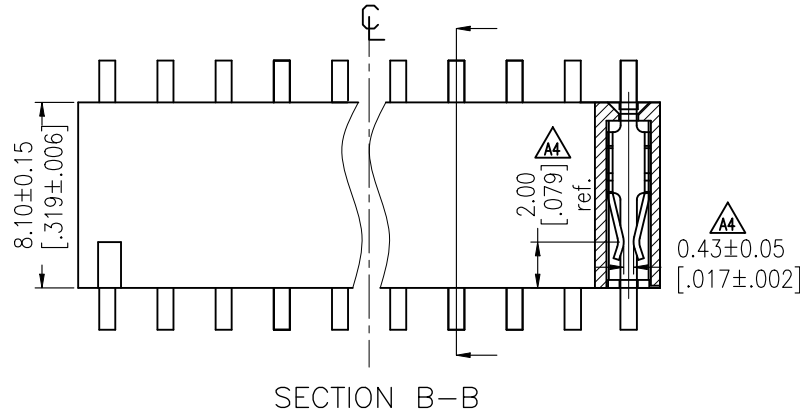


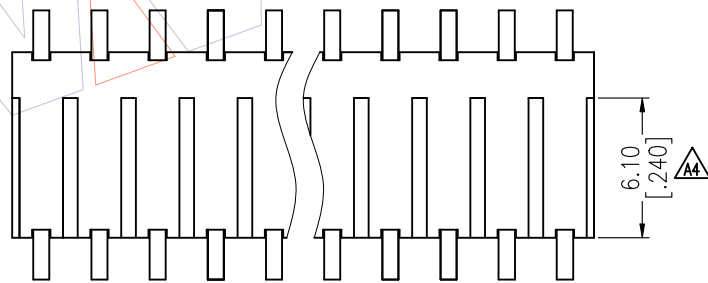
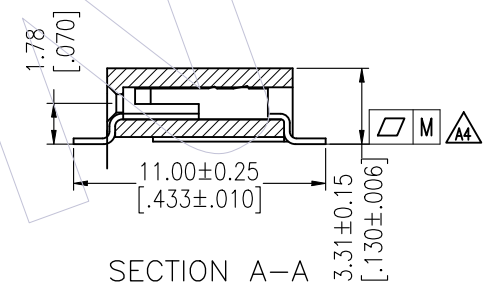
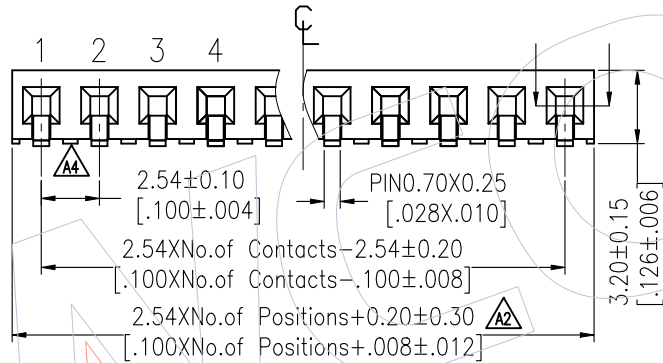
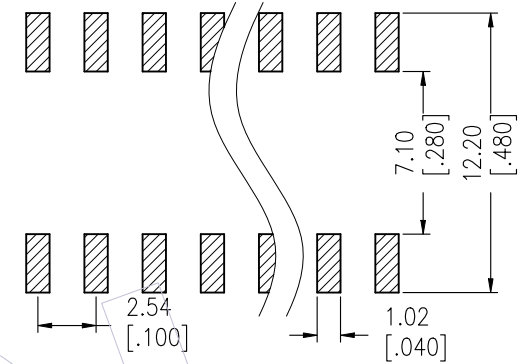
NOTES:

Current Rating: 3.0AMP  
 Contact Resistance: 20mΩ Max  
 Withstand Voltage: 1000V AC  
 Insulation Resistance: 1000MΩ Min  
 Operation Temperature: -40°C to +125°C(Au)  
 -40°C to +105°C(Sn)

Contact Material: Phosphor Bronze  
 Contact plating: Au Or Sn over Ni  
 Insulator Material: PA9T+33%G.F UL94V-0



Recommended P.C.B Layout(Top Side)  
 (PCB BOARD TOLERANCE±0.05)



Ordering Information

2134 - 1 XX M XX CUN X 1

No. of Pins per ROW: 02-40PIN  
 Contact Plating:  
 G0=Gold Flash  
 G3=10μ"Gold  
 G4=15μ"Gold  
 G5=30μ"Gold  
 S0=Gold Flash/Matte Tin  
 S3=10μ"Gold/Matte Tin  
 S4=15μ"Gold/Matte Tin  
 S5=30μ"Gold/Matte Tin  
 SN=Tin  
 SM=Matte Tin  
 Packing:  
 T=Tube  
 R=Tape&Reel

Item	Pitch	Mating
Standard	2.54	1125B
Alternate		

Pin(Per Row)	2-15P	16-25P	26-40P
M	0.10	0.15	0.20

A4	2020/11/30	Modify Flatness,Add VIEW&DIM.	A4	OPERATION	DRAW	DATE	SCALE	FIT	PART NO.
A3	2016/11/10	Modify	A3	X.X ±0.40	XSR	2020/11/30	UNIT	mm	2134-1XXMXXCUN1
A2	2012/09/20	MODIFY ADD +0.20	A2	X.XX ±0.25	CHECK	DATE	SIZE	A4	TITLE:
A0	2012/08/02	NEW	-----	X.XXX ±0.15	APPROVE	DATE	SHEET	1/1	2.54mm FEMALE HEADER SINGLE ROW 180°SMT SIDE ENTER H=3.2
REV	DATE	MODIFICATION DESCRIPTION	CHANGE	Angle ± 3°	APPROVE	DATE	PROJ.	Customer NO.	
				DIM TOL					

**WCON**  
 Http: www.wcon.com  
 WCON-Dongguan Tel: +86 769 85358920  
 WCON-Kunshan Tel: +86 512 57468408  
 Fax: +86 769 85358915  
 Fax: +86 512 57468468  
 E-mail: sales@wcon.com  
 E-mail: salesks@wcon.com