

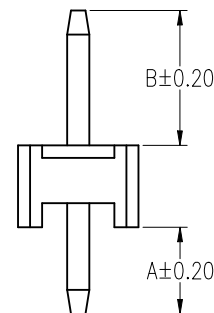
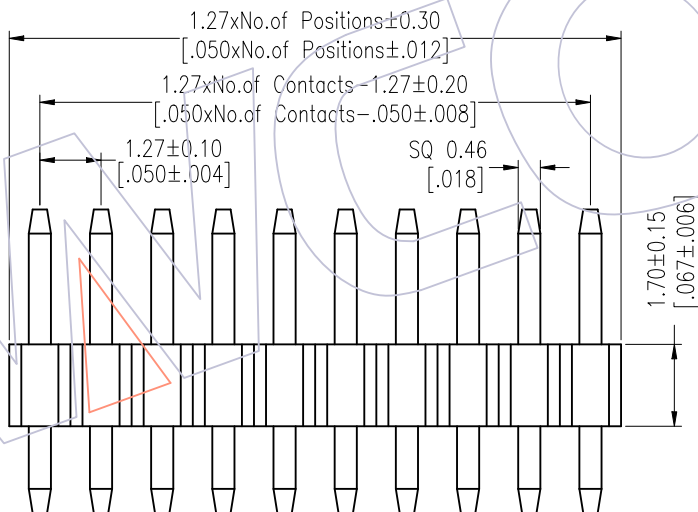
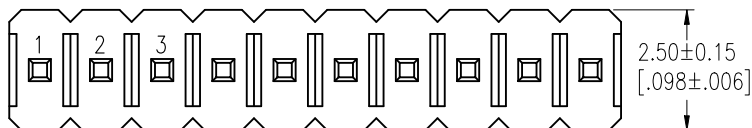
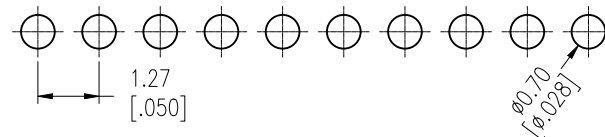
HSF

Recommended P.C.B Layout (Top Side)
(PCB BOARD TOLERANCE±0.05)

NOTES:

Rated Current:1.0AMP.
Contact Resistance:20mΩ Max.
Withstand Voltage:500V AC/DC
Insulation Resistance:1000MΩ Min.
Operation Temperature:-40°C to +105°C

Contact Material:Brass
Contact Plating:Au or Sn Over Ni
Insulator Material:PA9T+33%G.F UL94V-0 BK



Ordering Information

1317-11 XX XX S XXX C A XX

No. of Pins	Contact Plating	Pin Length	Insulator	Packing	Series No.
01~50	G0=Gold Flash	L=A+B+1.7	C=PA9T	A=Tray	01~99
	G3=10u"Gold	Std:063=6.3			
	G4=15u"Gold	095=9.5			
	G5=30u"Gold				
	S0=Gold Flash/Tin				
	S3=10u"Gold/Tin				
	S4=15u"Gold/Tin				
	S5=30u"Gold/Tin				
	SN=Tin				
	SM=Matte Tin				

Item	Pin Length	A	B	Mating
Standard	6.3	1.80	2.80	2346
	9.5	1.80	6.00	2385
Alternate				

OPERATION	DRAW	DATE	SCALE	Fit	PART NO.
X.X ±0.40	William Chen	2018/01/17	UNIT	mm [inch]	1317-11XXXXSXXXCXXX
X.XX ±0.25	CHECK	DATE	SIZE	A4	TITLE:
X.XXX ±0.15	APPROVE	DATE	SHEET	1/1	1.27 Pin Header, SINGLE ROW, S/T, H=1.7
Angle ± 3°			PROJ.		Customer NO.
DIM TOL					

WCON
Http: www.wcon.com

WCON-Dongguan Tel: +86 769 85358920 Fax: +86 769 85358915 E-mail: sales@wcon.com	WCON-Kunshan Tel: +86 512 57468408 Fax: +86 512 57468468 E-mail: salesks@wcon.com
---	--

REV	DATE	MODIFICATION DESCRIPTION	CHANGE
A1	2018/01/17	MODIFY PART NO.	-----
A0	2012/03/16	NEW	-----