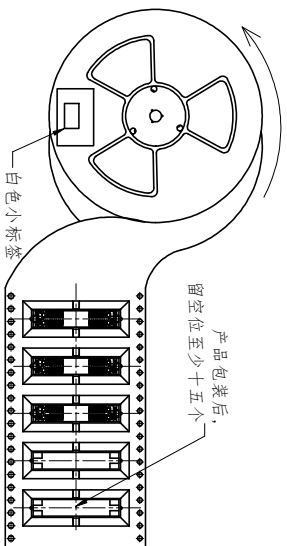
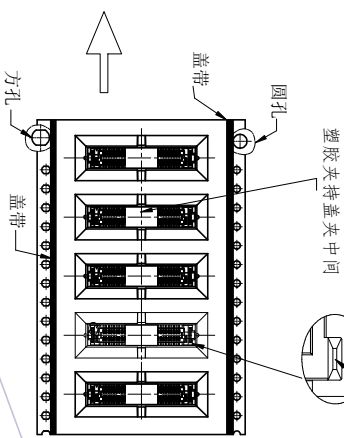


卷带回卷产品的卷向

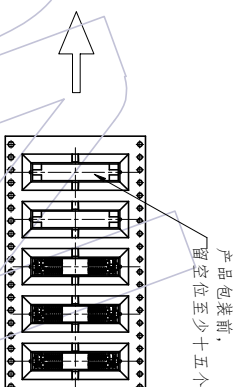
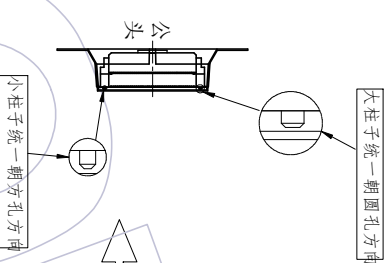


NO3: 载带卷装须依照逆时针方向卷装(如图所示)
载带尾端留空15PCS空槽(250PCS卷)并贴上标签

公座凹槽,统一朝右

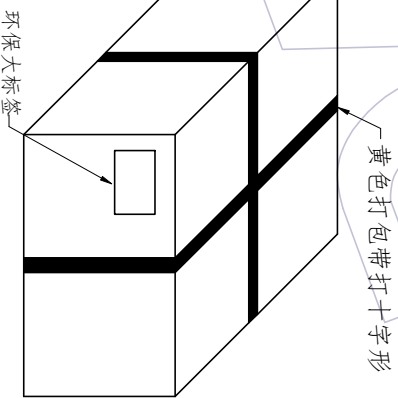
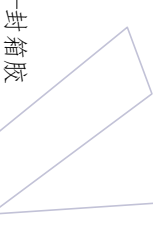
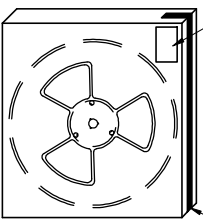


NO2: 将产品放入载带凹槽后,用盖带封装(冷封)
注意:盖带与承载带的拉力(30g-120g)
产品放入的方向须与图示一致,不可反装



NO1: 包装产品前,注意留空位至少十五个
以及卷盘送载带的方向按逆时针旋转

白色小标签



NO4: 将卷盘套PE-32防水袋,放一包干燥剂后,真空机封口,放入内箱,
用封箱胶封装好,并贴上标签,(1卷盘/内箱,250PCS/内箱)

NO5: 将内箱放入外箱内,套PE-18防水袋,
并贴上标签。(3内箱/外箱,750PCS/外箱)

说明

1. 产品如图所示形态放入载带
2. 注意各标签样式、位置及方向的一致性;
3. 标签如客户有特殊要求,则按客户要求黏贴;
4. 打外箱包装带时需注意,打为十字型,另出国内客户,未打包装带。
5. 未尽事宜依据交货注意事项。

| W | S | F | Reel/内箱 | 内箱/外箱 |
|------------|-------------|------------|---------|-------|
| 12.0±0.30 | \ | 5.50±0.15 | 6 | 3 |
| 16.0±0.30 | \ | 7.50±0.15 | 4 | 3 |
| 24.0±0.30 | \ | 11.50±0.15 | 3 | 3 |
| 32.0±0.30 | 28.40±0.15 | 14.20±0.15 | 2 | 3 |
| 44.0±0.30 | 40.40±0.15 | 20.20±0.15 | 2 | 3 |
| 56.0±0.30 | 52.40±0.15 | 26.20±0.15 | 1 | 3 |
| 72.0±0.30 | 68.40±0.15 | 34.20±0.15 | 1 | 3 |
| 88.0±0.30 | 84.40±0.15 | 42.20±0.15 | 1 | 3 |
| 104.0±0.30 | 100.40±0.15 | 50.20±0.15 | 1 | 3 |

WCON

WCON Hardware Electronics Co., Ltd

料号 PART NO. 3614-PXXX-110XXR01

品名 TITLE: 0.80mm BTB SMT, "D"型公头加塑盖带柱
H=1.00, XXP 卷带包装规范

| 变更 | 零件图 | 颜色 | SCALE | 变更 | 核准 | 变更 | 核准 |
|------------|-------|------------------------------|-------|--------|---------|--------------------------|---------|
| REV | X.X | COLOR | 1:1 | CHANGE | APPROVE | DESCRIPTION | APPROVE |
| A0 | X.X | Black | mm | NEW | | MODIFICATION DESCRIPTION | |
| 2013/07/11 | X.XX | Black Conductive Polystyrene | A4 | | | | |
| | X.XXX | 设计 | 1/1 | | | | |
| | Angle | 刘青山 | | | | | |
| | ± 2° | 2013/07/11 | | | | | |
| | DIM | 审核 | | | | | |
| | TOL | CHECK | | | | | |
| | | 核准 | | | | | |
| | | APPROVE | | | | | |
| | | | | | | | |
| | | | | | | | |
| | | | | | | | |
| | | | | | | | |
| | | | | | | | |

变更记录