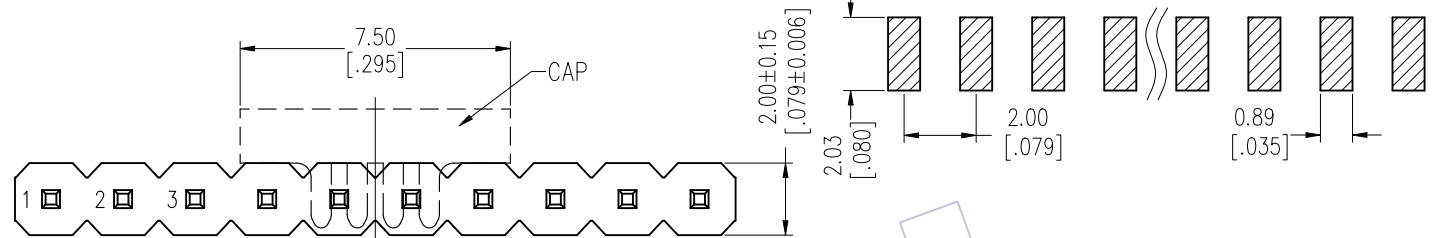


HSF

NOTES:
 Rated Current: 2.0AMP.
 Contact Resistance: 20mΩ Max.
 Withstand Voltage: 500V AC/DC
 Insulation Resistance: 1000MΩ Min.
 Operation Temperature: -40°C to +125°C(GOLD)
 -40°C to +105°C(TIN) $\Delta 2$

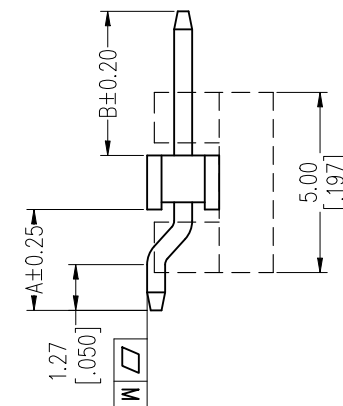
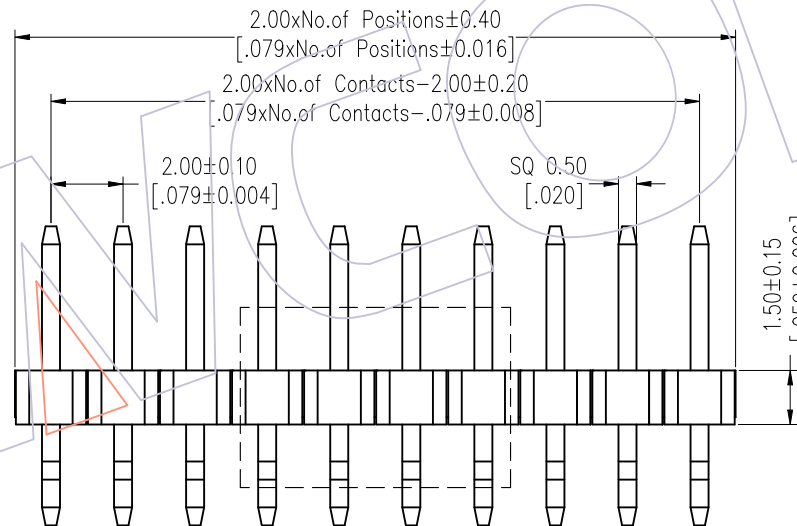
Contact Material: Brass
 Contact Plating: Au or Sn Over Ni
 Insulator Material: PA9T+33%G.F UL94V-0 BK

Recommended P.C.B Layout (Top Side)
 (PCB BOARD TOLERANCE ± 0.05)



Dual Numbers

Odd Number



Ordering Information

1215-11 XX XX Z XXX C R XX $\Delta 2$

No. of Pins	Contact Plating	Pin Length	Insulator Material	Packing	Series No.
02-40	G0=Gold Flash	L=A+B+1.7	C=PA9T	A=Tray	01-99
	G3=10u"Gold	Standard:065=6.5		T=Tube	
	G4=15u"Gold	075=7.5		P=Tube+CAP	
	G5=30u"Gold	085=8.5		R=Tape&Reel+CAP	
	S0=Gold Flash/Tin				
	S3=10u"Gold/Tin				
	S4=15u"Gold/Tin				
	S5=30u"Gold/Tin				
	SN=Tin				
	SM=Matte Tin				

Item	Pin Length	A	B	Mating
Standard	6.50	2.80	1.90	
	7.50	2.80	3.00	
	8.50	2.80	4.00	2240 2243 2263 2272
Alternate				

PIN	2-15P	16-25P	26-40P
M	0.10	0.15	0.20

REV	DATE	MODIFICATION DESCRIPTION	CHANGE	OPERATION	DRAW	DATE	SCALE	Fit	PART NO.
A2	2018/09/07	Modify	$\Delta 2$	X.X ± 0.40	Dim	2018/09/07	UNIT	mm	1215-11XXXXZXXXCRXX $\Delta 2$
A1	2018/01/18	Modify P/N	$\Delta 1$	X.XX ± 0.25	CHECK	DATE	SIZE	A4	TITLE:
A0	2012/04/26	NEW	-----	X.XXX ± 0.15	APPROVE	DATE	SHEET	1/1	PH2.00 SINGLE ROW 90°SMT H=1.5
				Angle ± 3°			PROJ.		Customer NO.
				DIM TOL					

WCON
 Http: www.wcon.com
 WCON-Dongguan Tel: +86 769 85358920
 WCON-Kunshan Tel: +86 512 57468408
 Fax: +86 769 85358915 Fax: +86 512 57468468
 E-mail: sales@wcon.com E-mail: salesks@wcon.com